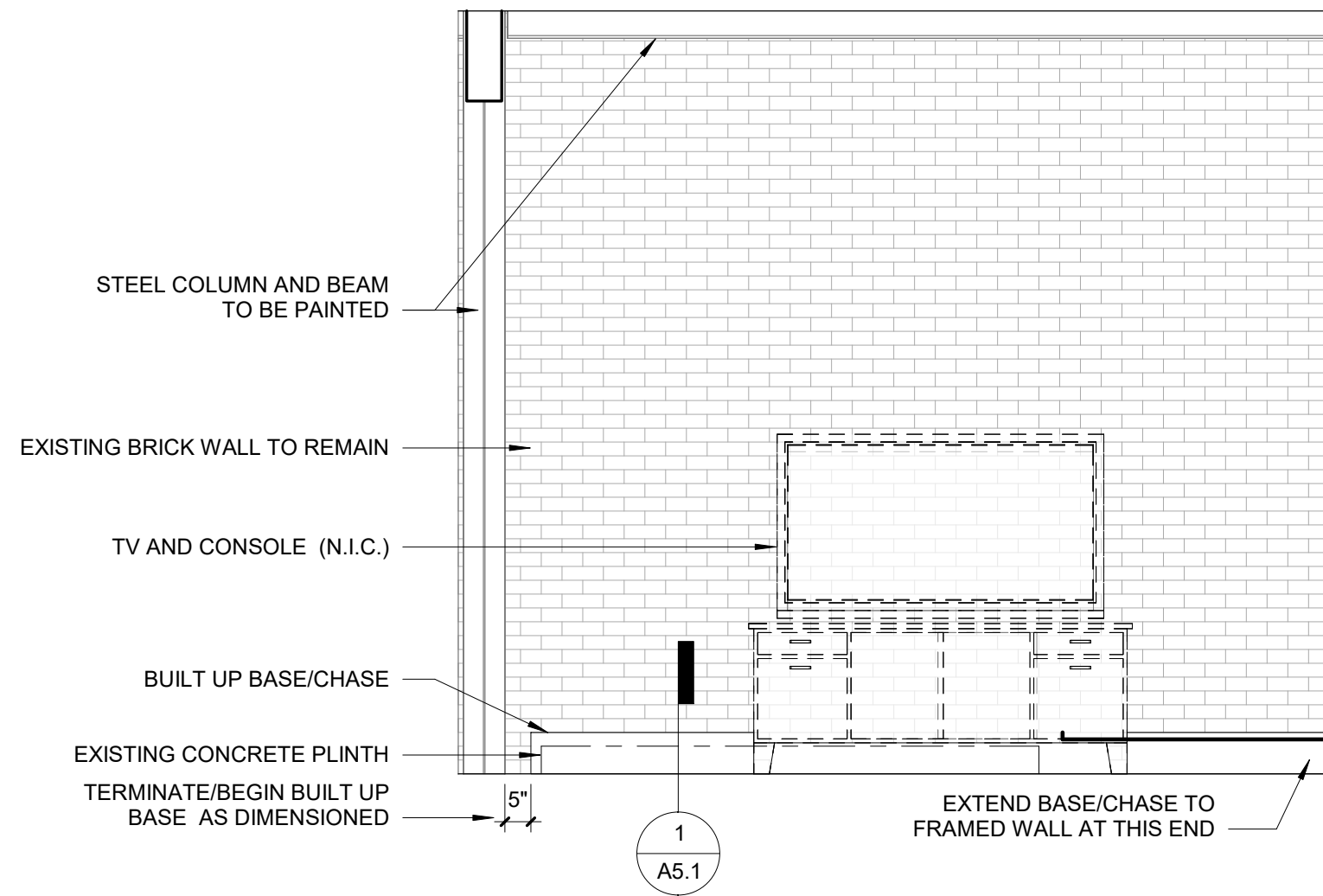
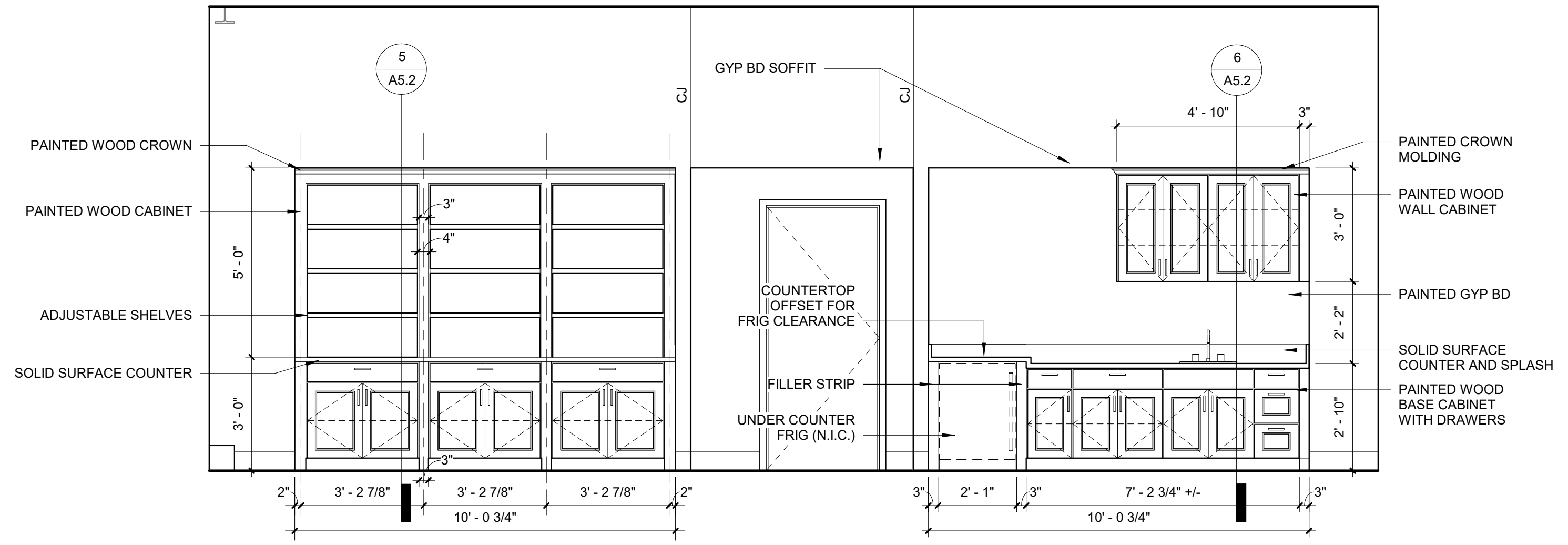


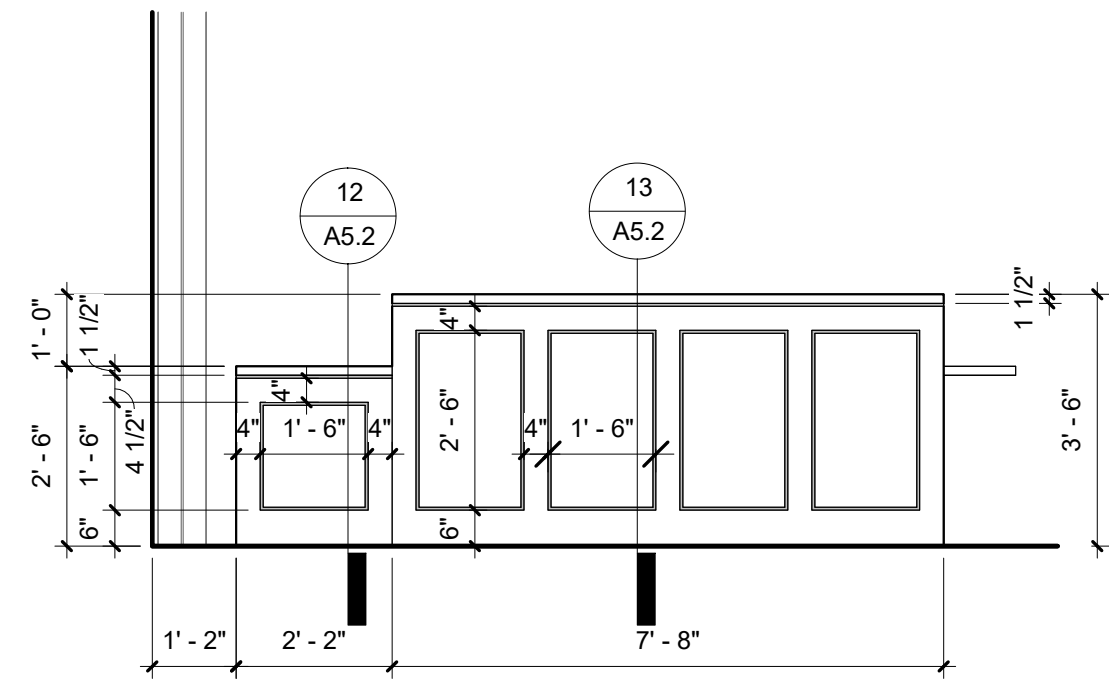
1 Base/Chase Detail  
1 1/2" = 1'-0"



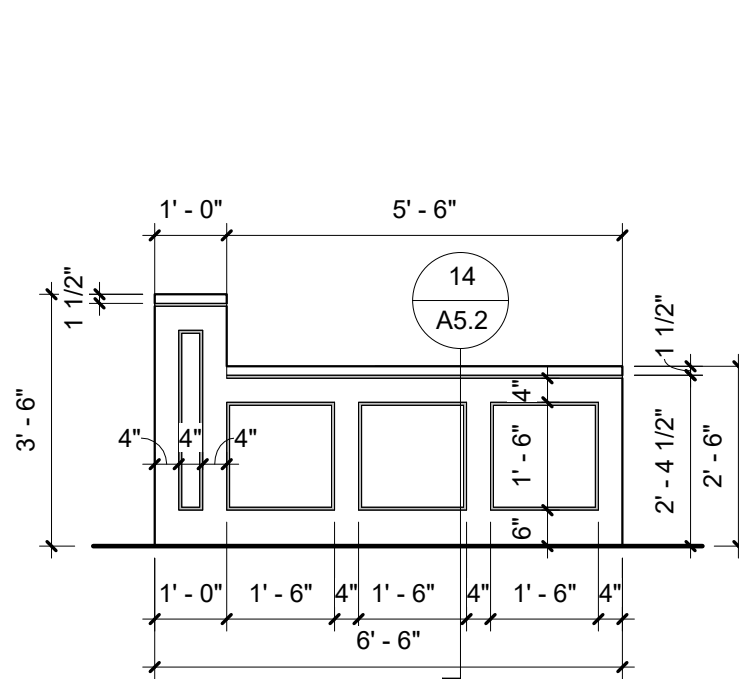
2 Conference Room  
3/8" = 1'-0"



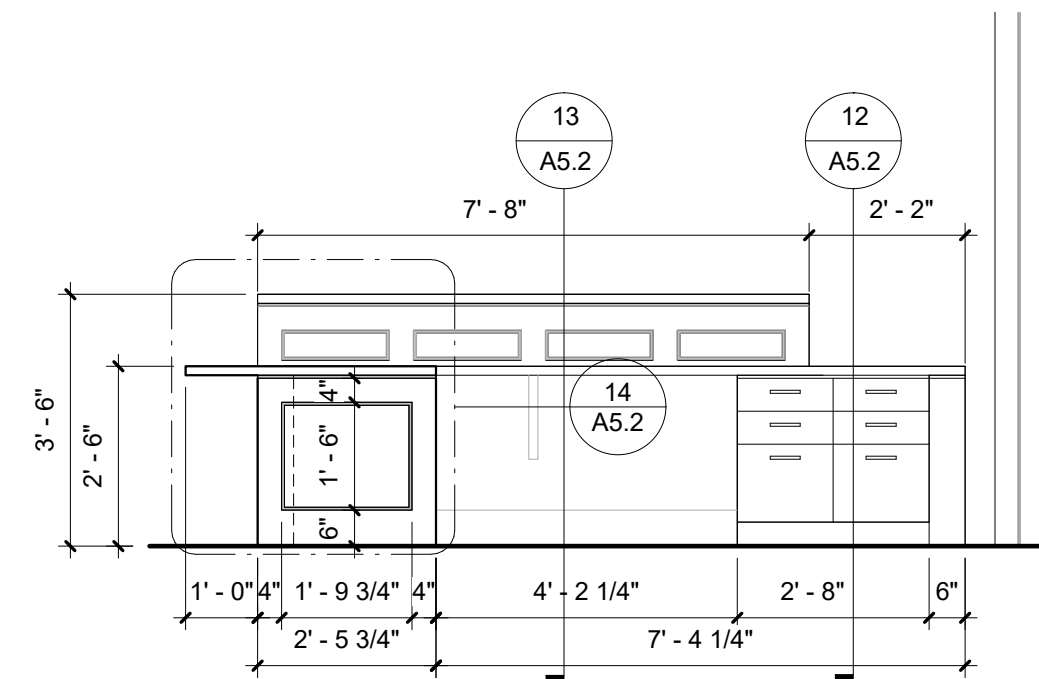
3 Conference Room  
3/8" = 1'-0"



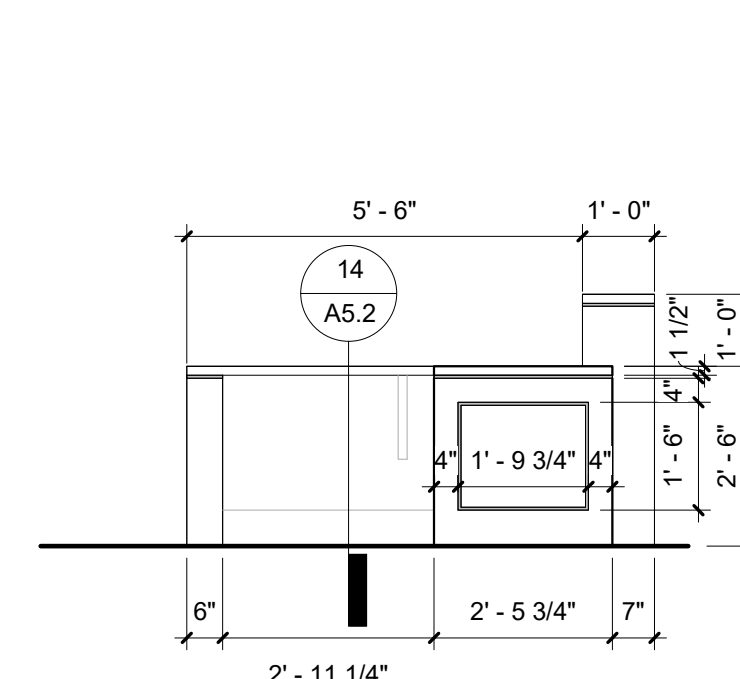
4 Receptionist  
3/8" = 1'-0"



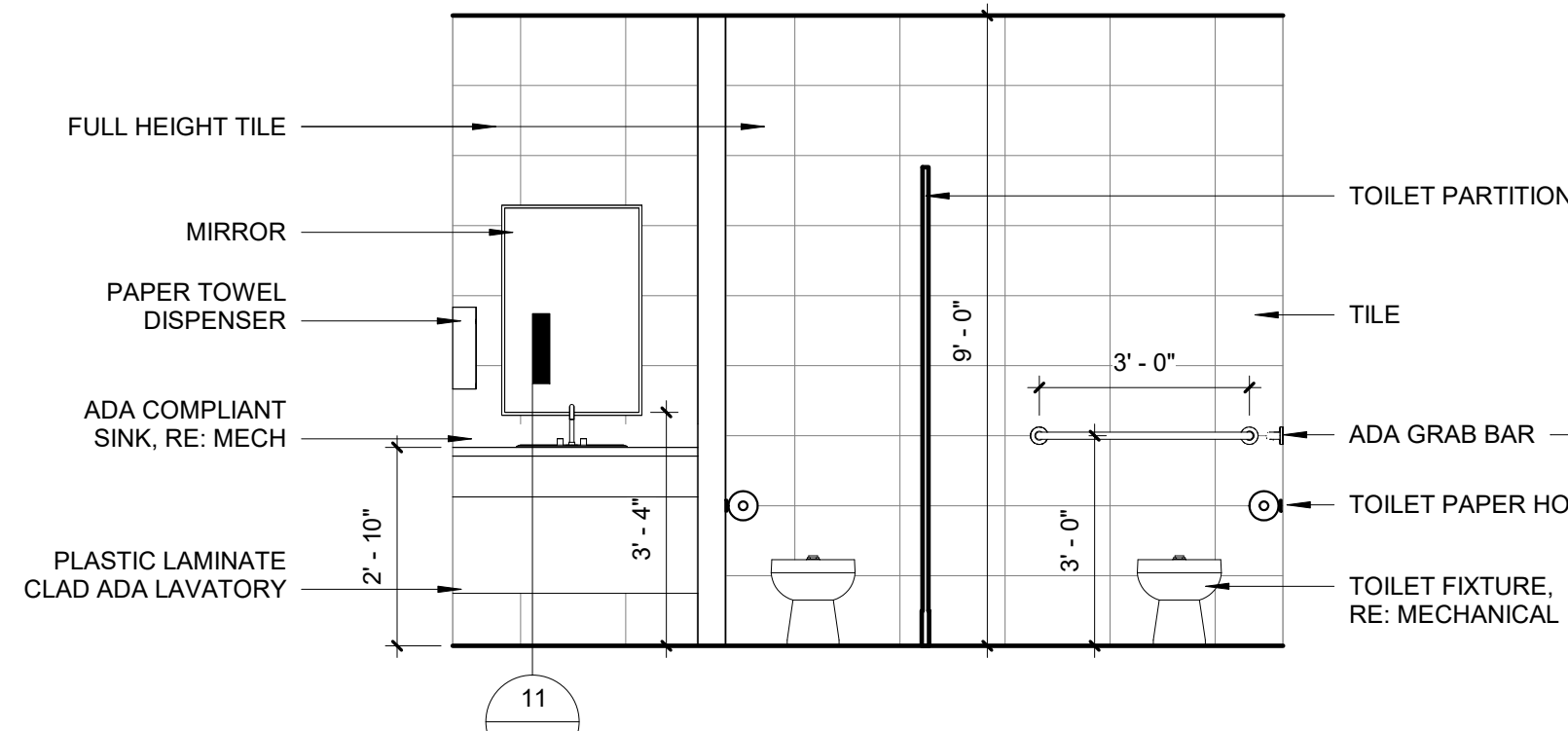
5 Receptionist  
3/8" = 1'-0"



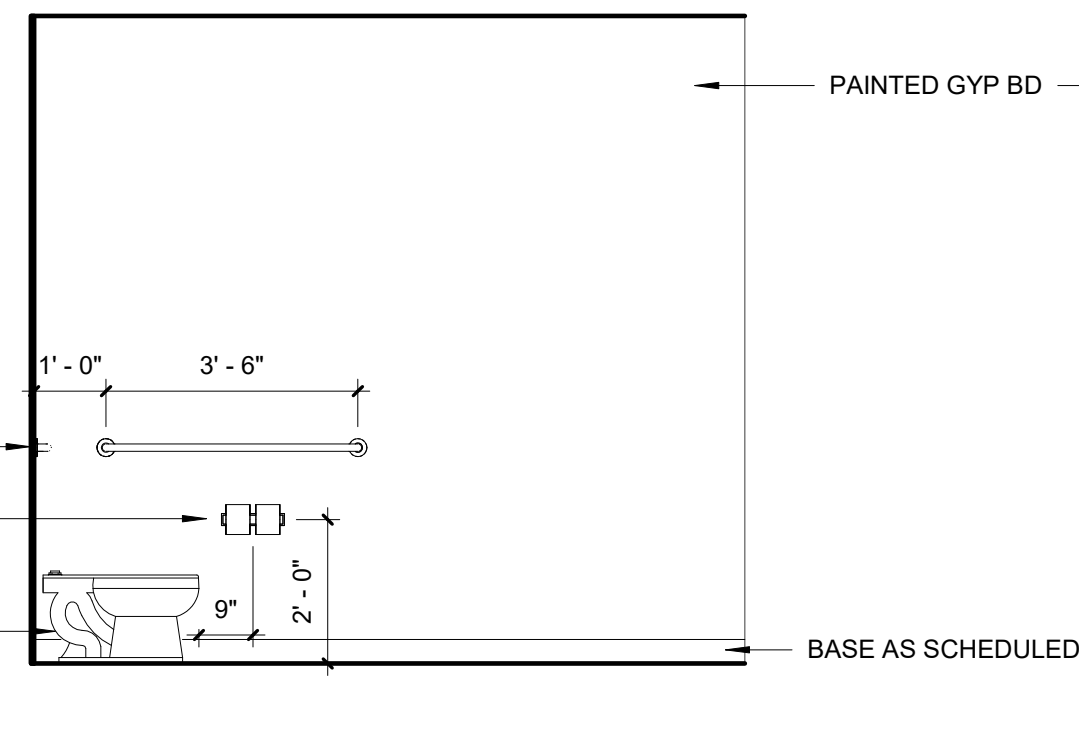
6 Receptionist  
3/8" = 1'-0"



7 Receptionist  
3/8" = 1'-0"

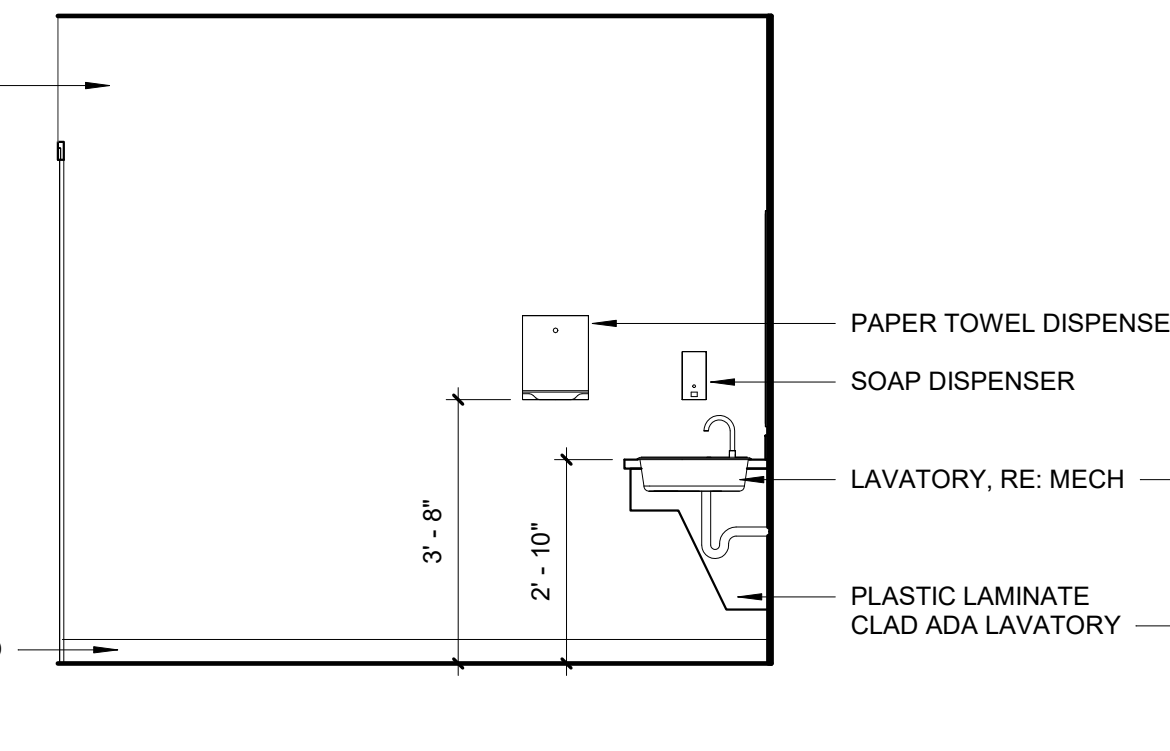


8 Toilet - Women  
3/8" = 1'-0"



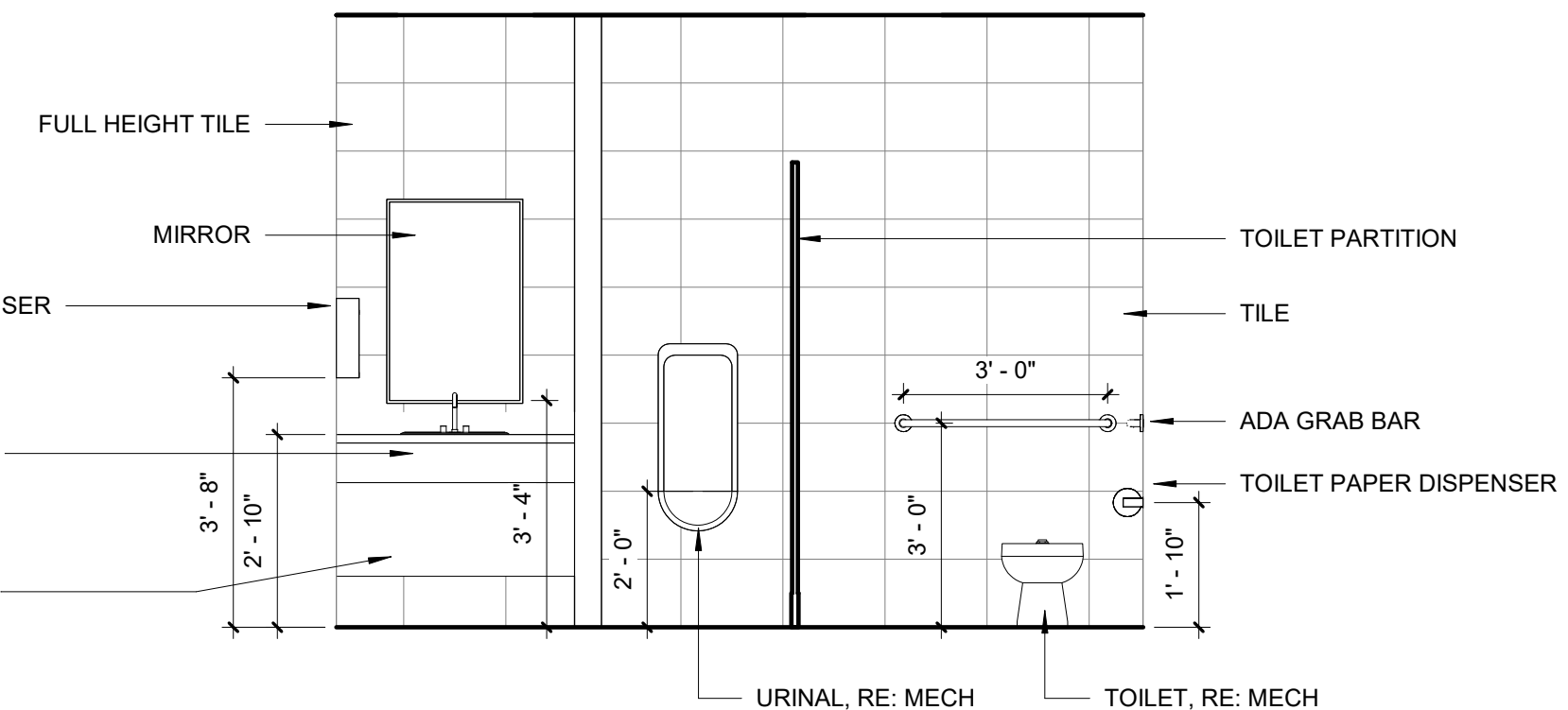
9 Toilet - Women  
3/8" = 1'-0"

(Note - Men's similar)

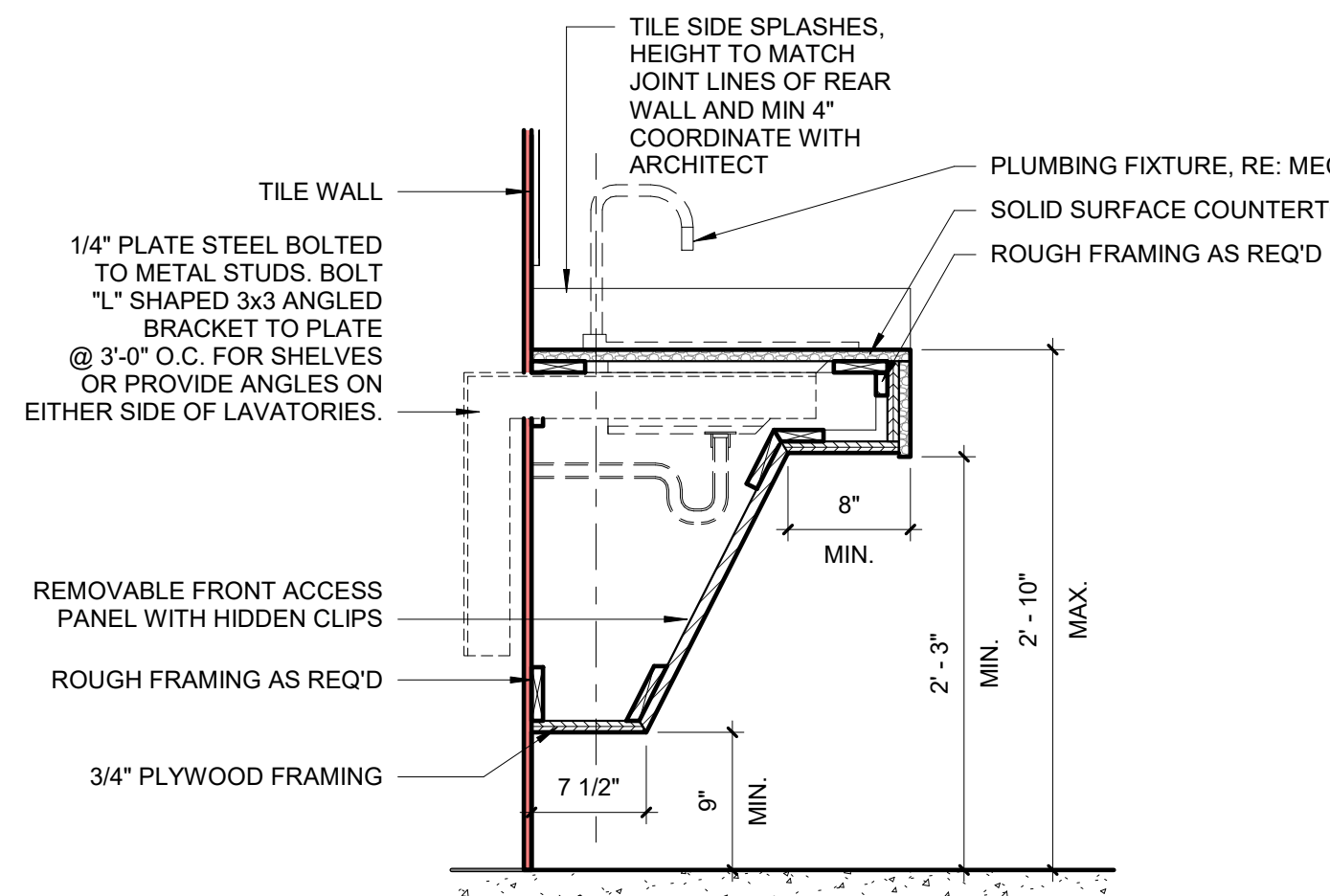


10 Toilet - Men  
3/8" = 1'-0"

(Note - Women's similar)



12 Toilet - Men  
3/8" = 1'-0"



11 Lavatory  
1" = 1'-0"



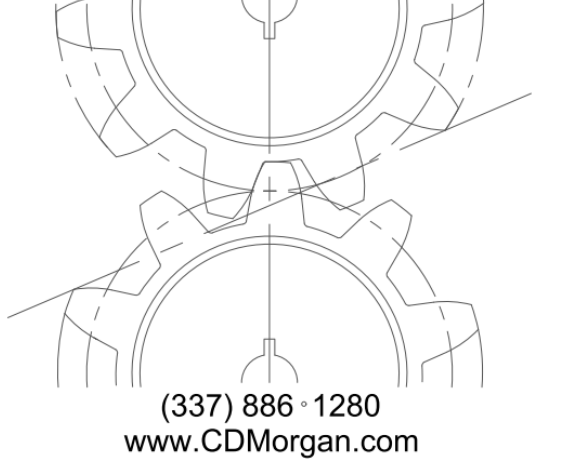
Job Title:

Office of the State  
Public Defender  
District 8 Office  
Building

111 West Main Street  
Winnfield, LA 71483

CDMorgan

& ASSOCIATES, INC.  
ENGINEERING CONSULTANTS  
A PROFESSIONAL ENGINEERING AND ARCHITECTURAL  
CORPORATION  
LOUISIANA



(337) 886-1280  
www.CDMorgan.com



Seal:

May 15, 2026  
Construction Documents

No.	Description	Date

KEY PLAN

Interior Elevations

Project No.: BLO001-25 Drawn By: JWA

A5.1

OSPD

Sheet No.:

5/18/2026 12:05:27 PM